

MATERIAL AND CONSTRUCTION

EXTRUDED ALUMINIUM SECTIONS 6063-T5

2mm (.070")

PERIMETER FRAME DETAILS

CHANNEL FRAME TYPE U,
(SECTION C)

MULLION DETAILS

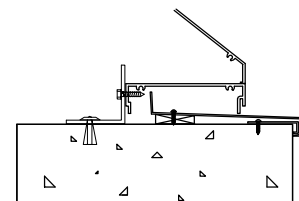
- CONTINUOUS TYPE (SECTION E), (SECTION B)
C/W BLADE BRACES ON BLADE SPANS OF 1600mm(63")
FOR CONTINUOUS EXTERNAL APPEARANCE IN
MULTIPLE SECTIONS
- MULLION TYPE (SECTION A) C/W VISIBLE INTERLOCK
MULLIONS, VARIOUS WIDTHS AVAILABLE

BIRDSCREENS

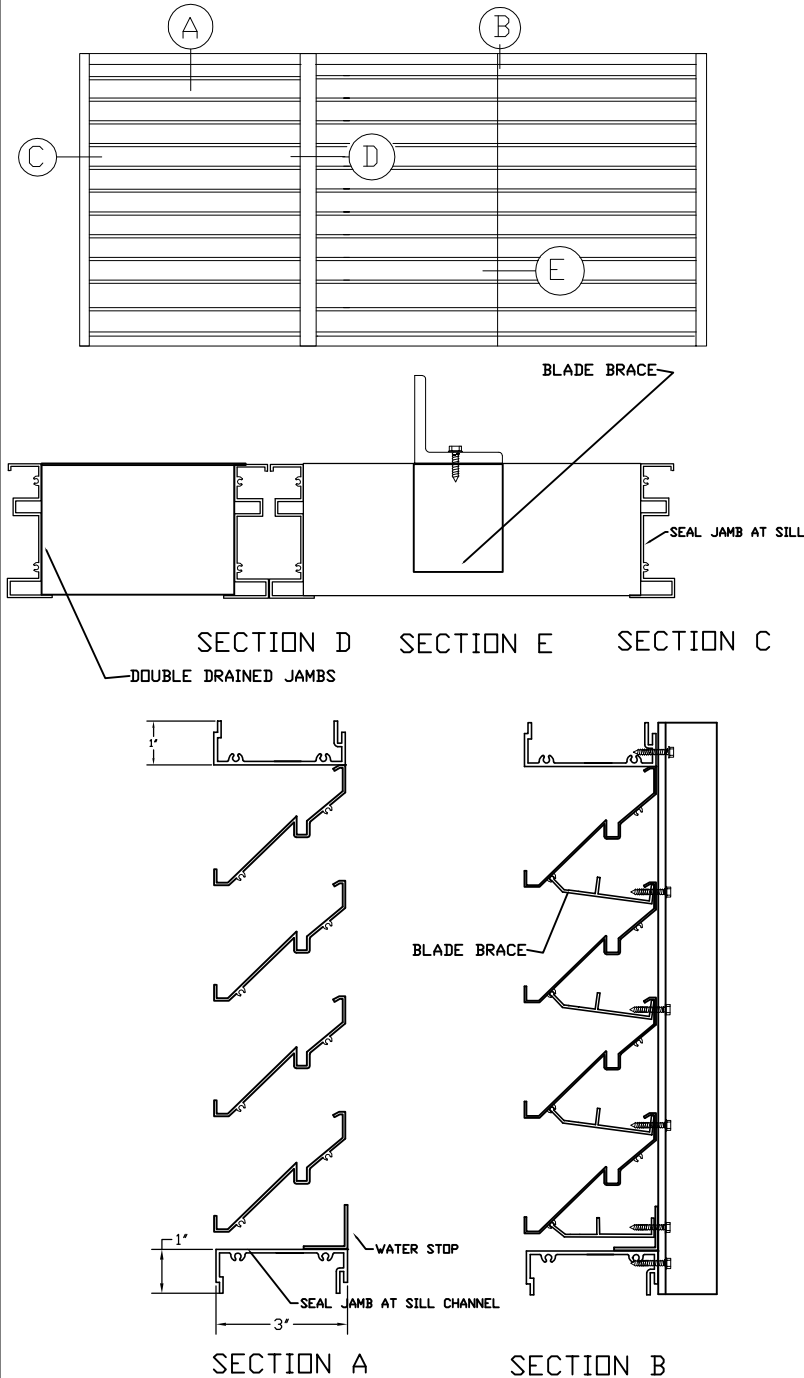
- ALUMINUM 13 X 13mm (1/2" X 1/2") MESH, 1.6mm(.063")
WIRE C/W EXTRUDED ALUMINUM FRAME, REMOVABLE
- GALV. 19 GAUGE 2/MESH WIRE MECHANICALLY FASTENED
- INSECT SCREEN 18 X 14 MESH ALUM. WIRE

FINISH

- MILL FINISH
 - ANODIZED ALUMINUM CLEAR # 17
 COLOUR (SPECIFY) _____
 - PAINT ACRYLIC 5000 SERIES
 FLUOROPOLYMER 10,000 SERIES
- SPECIFY COLOUR # AND MANUFACTURE



SILL OPTION



ITEM #	QUANTITY	WIDTH	HEIGHT	FRAME	MULLION	REMARKS	PROJECT
							ARCH. / ENGR.
#1							CONTRACTOR
#2							DATE
#3							NOTES
#4							
#5							
#6							