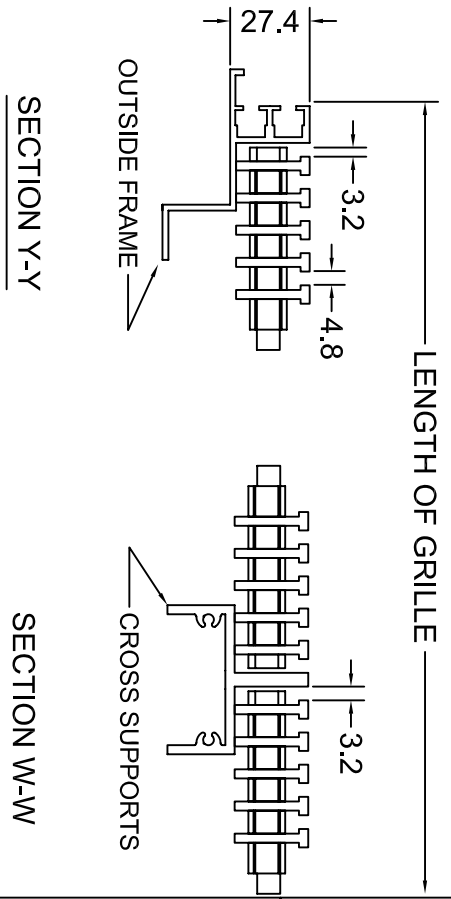
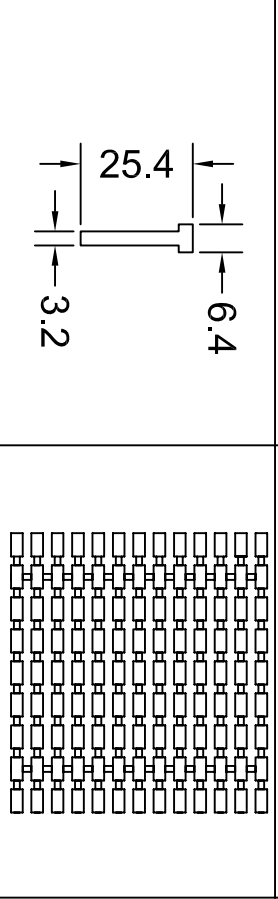


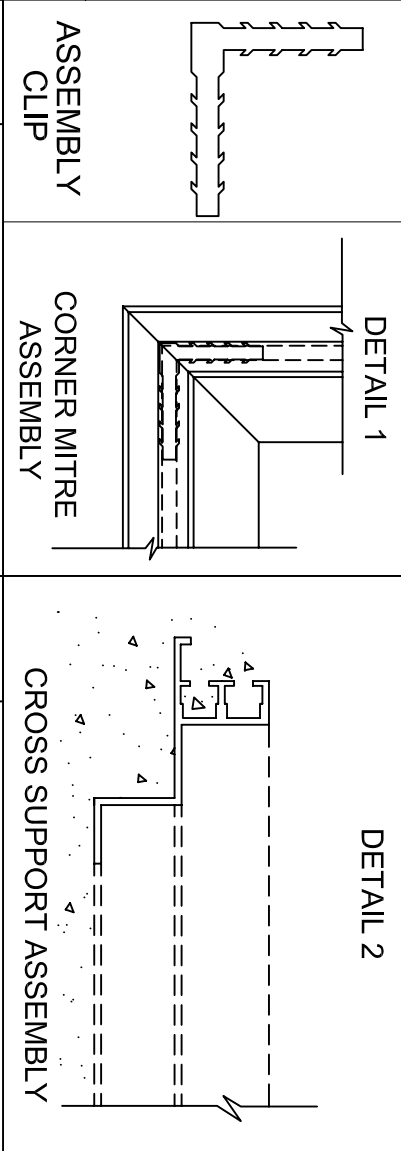
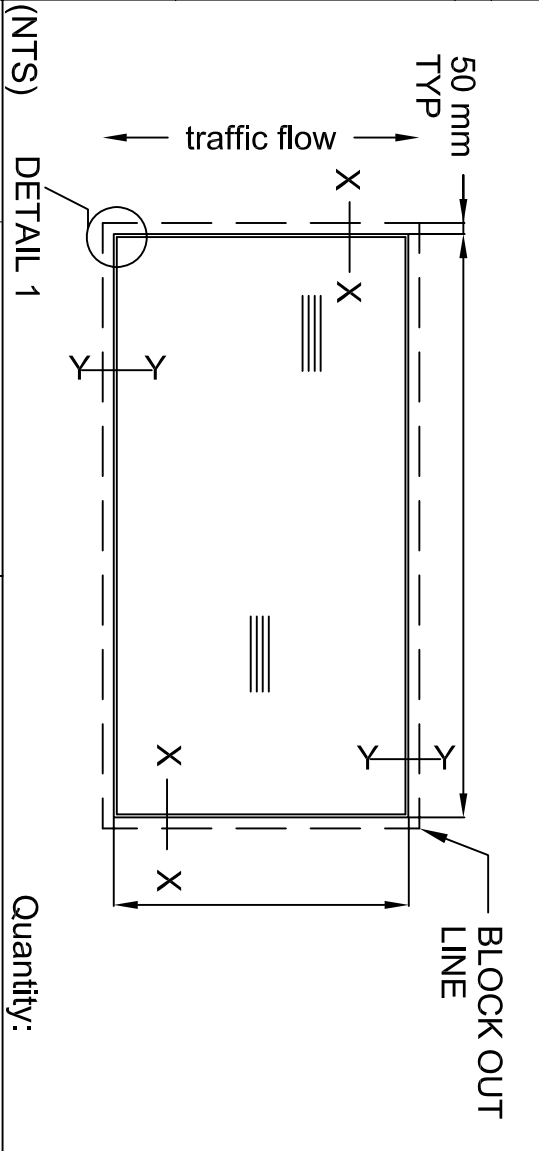
MODEL: AGS-200-D

Rail Detail

Plan View Of Grille



Project:	Sheet:
Architect:	of
Customer:	Date:
Rep.:	



<p>GRILLES</p> <p>Material : Aluminium 6061-T6 Assembly : 5/16" Steel rods 1/2" Aluminum spacers</p> <p>Finish Options : <input type="checkbox"/> Mill <input type="checkbox"/> Clear anodized <input type="checkbox"/> Bronze anodized</p>		<p>FRAMES</p> <p>Material : Aluminium 6061-T6 Assembly : Field installed with corner clips</p> <p>Finish Options: <input type="checkbox"/> Mill <input type="checkbox"/> Clear anodized <input type="checkbox"/> Bronze anodized</p>	
<p>Pan Options</p> <p><input type="checkbox"/> 20G.Gal.steel <input type="checkbox"/> 16G.Aluminum <input type="checkbox"/> 20G.Stainless steel</p>		<p>Accessories</p> <p><input type="checkbox"/> Drain <input type="checkbox"/> Hinge <input type="checkbox"/> Lock down</p>	
<p>ASSEMBLY</p> <p>Quantity:</p>		<p>DETAIL 1</p>	
<p>DETAIL 1</p>		<p>DETAIL 2</p>	
<p>ASSEMBLY CLIP</p>		<p>CORNER MITRE ASSEMBLY</p>	
<p>CROSS SUPPORT ASSEMBLY</p>			
File #	No.	By:	Date:
P.O.	Revision Record:		
<p>Assembly</p> <p>Factory installed to inside of frame pocket</p>		<p>Approved:</p>	
<p>1734 Orangebrook Court Pickering, Ont. L1W 3G8, Canada Tel: 905-420-0485 / 1-888-624-4557 Fax: 905-420-4564 / 1-888-624-4558 engineering @ the-mcgill-group.com http://www.the-mcgill-group.com</p>			