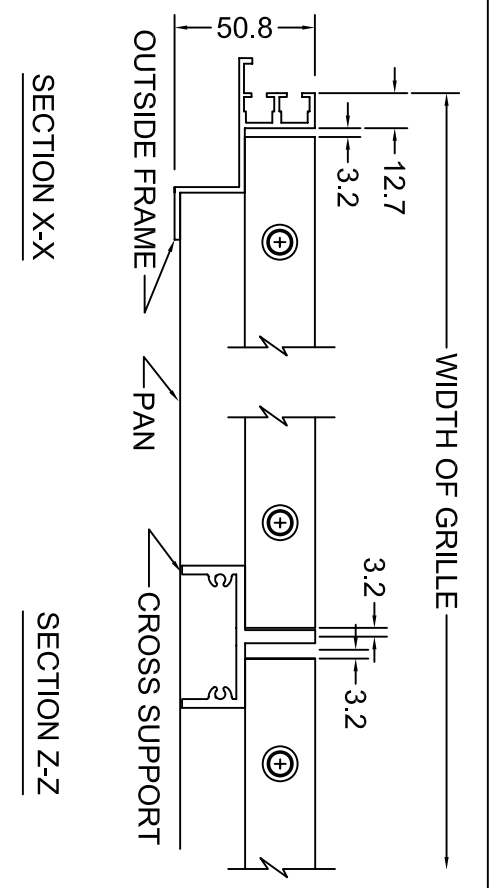
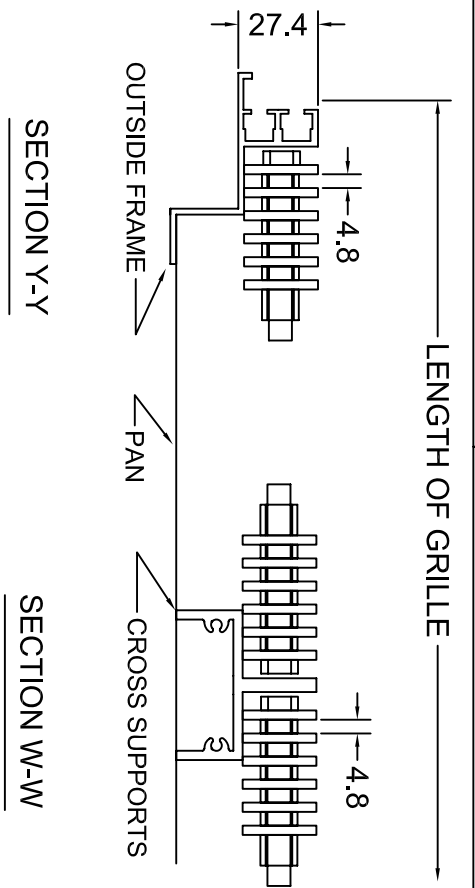
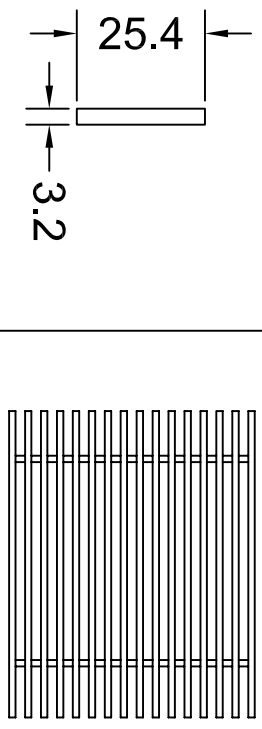
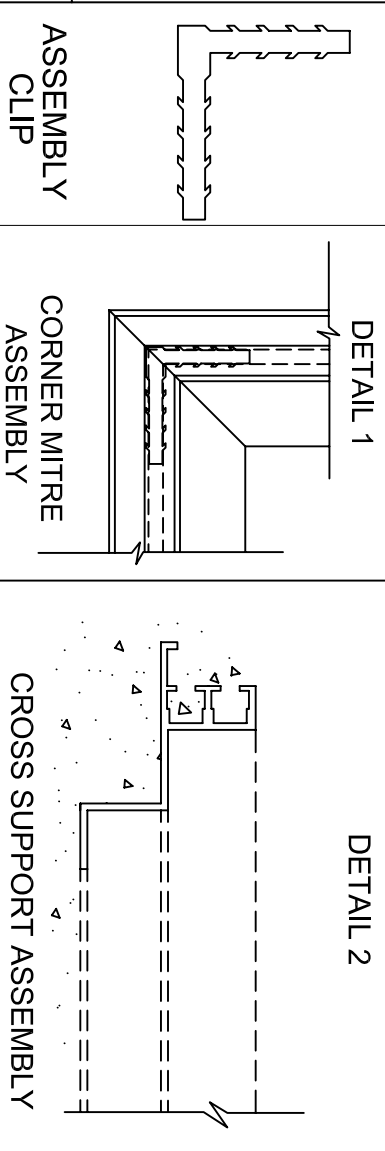
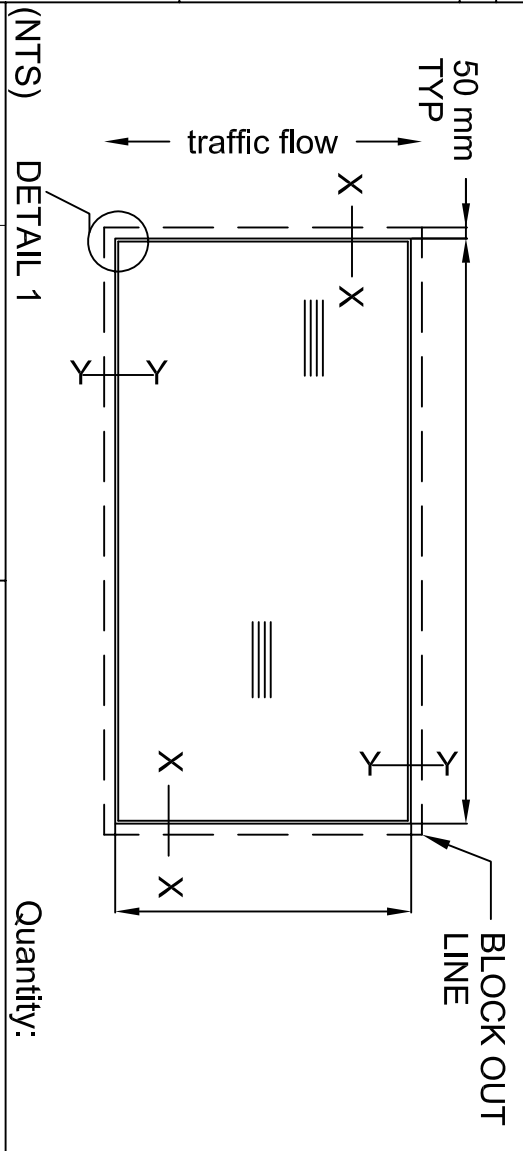


Rail Detail

Plan View Of Grille



Project:	Sheet:
Architect:	of
Customer:	Date:
Rep.:	



GRILLES		FRAMES	
Material:	Aluminium 6061-T6	Material:	Aluminium 6061-T6
Assembly:	5/16" Steel rods 1/2" Aluminium spacers	Assembly:	Field installed with corner clips
Finish Options:	<input type="checkbox"/> Mill <input type="checkbox"/> Clear anodized <input type="checkbox"/> Bronze anodized	Finish Options:	<input type="checkbox"/> Mill <input type="checkbox"/> Clear anodized <input type="checkbox"/> Bronze anodized
Pan Options:	<input type="checkbox"/> 20G. Gal. steel <input type="checkbox"/> 16G. Aluminum <input type="checkbox"/> 20G. Stainless steel	Assembly:	<input type="checkbox"/> Drain <input type="checkbox"/> Hinge <input type="checkbox"/> Lock down
File #	No.	By:	Date:
Revision Record:	Approved:	Accessories:	
P.O.	Factory installed to inside of frame pocket	1734 Orangethrook Court Pickering, Ont. L1W 3G8, Canada Tel: 905-420-0485 / 1-888-624-4557 Fax: 905-420-4564 / 1-888-624-4558 engineering @ the-mcgill-group.com http://www.the-mcgill-group.com	